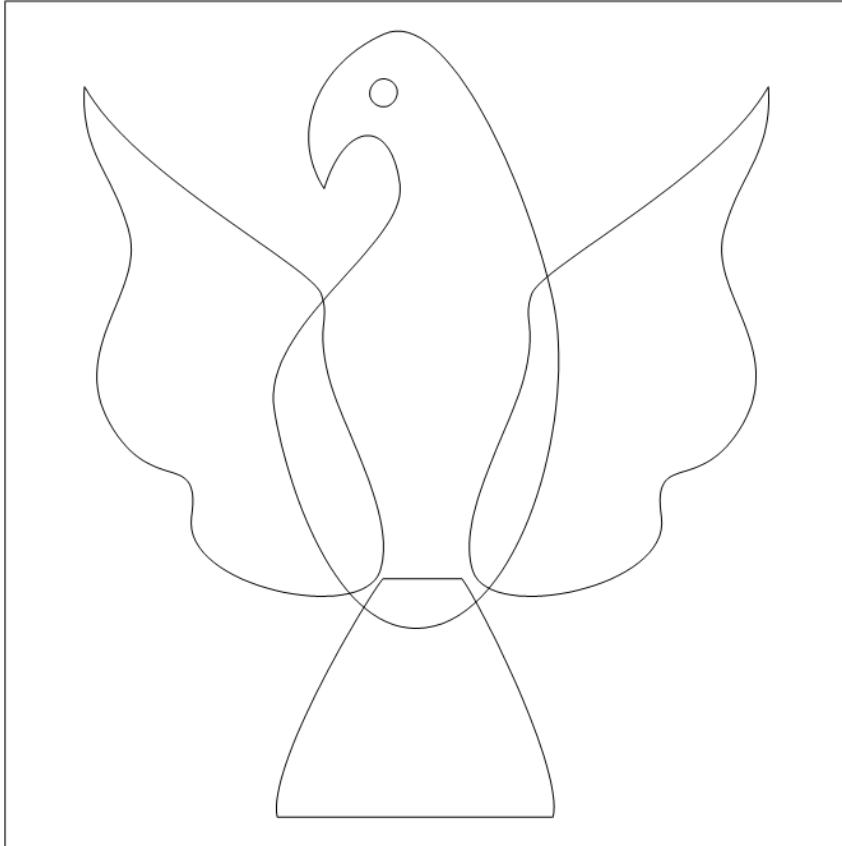


Photo Image Quilt Designs

Club EQ Challenge

September 2010

Antique Eagle 2 from EQ Block Library

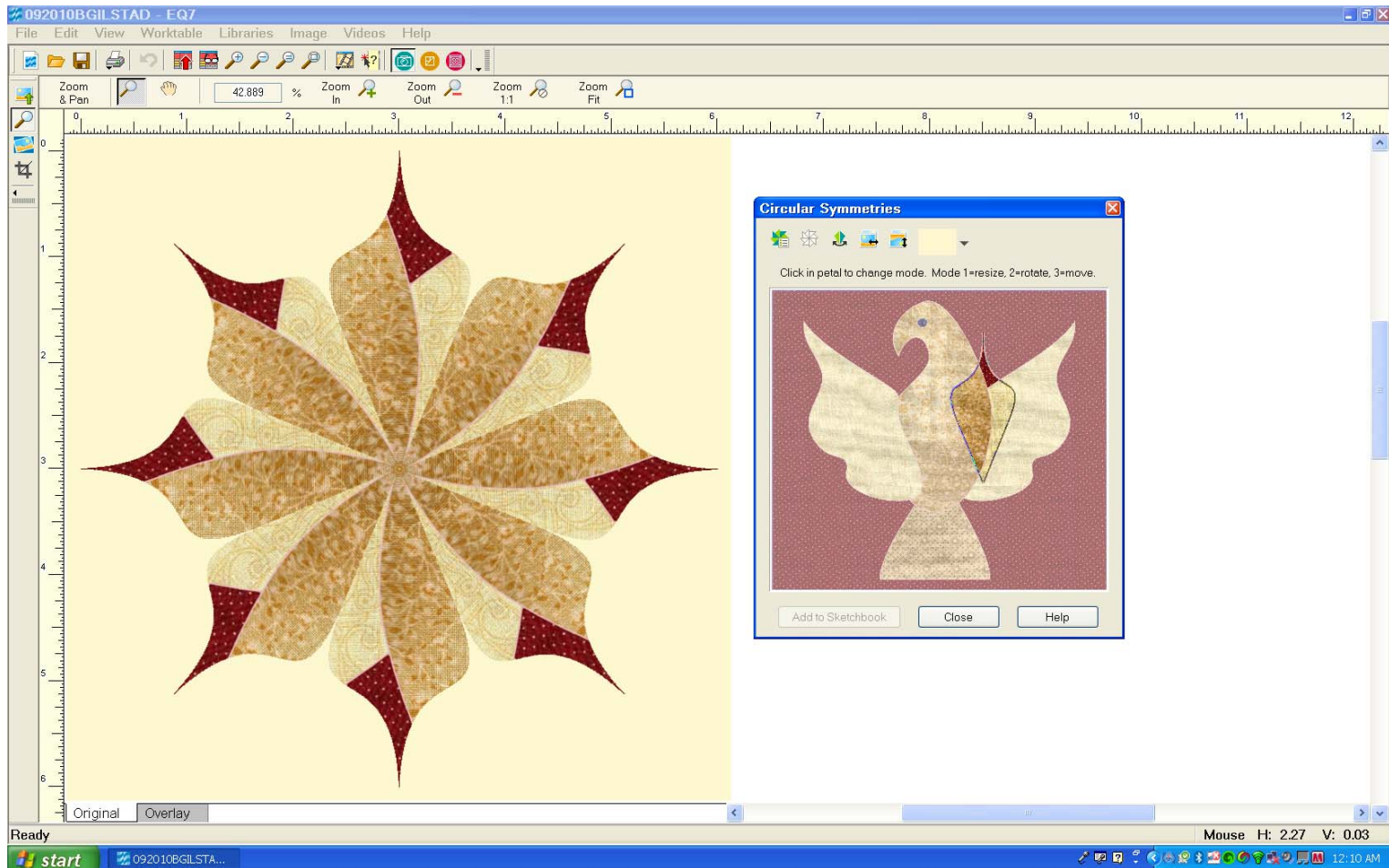


Started out with one applique block



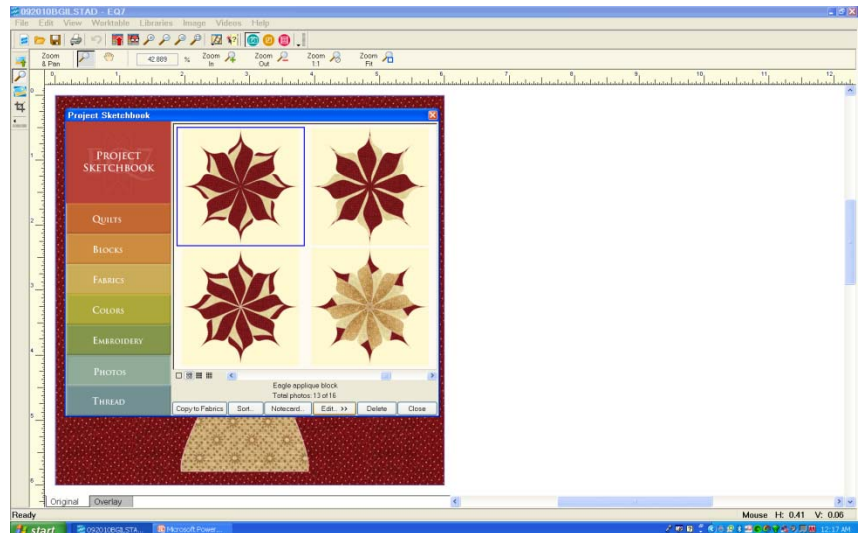
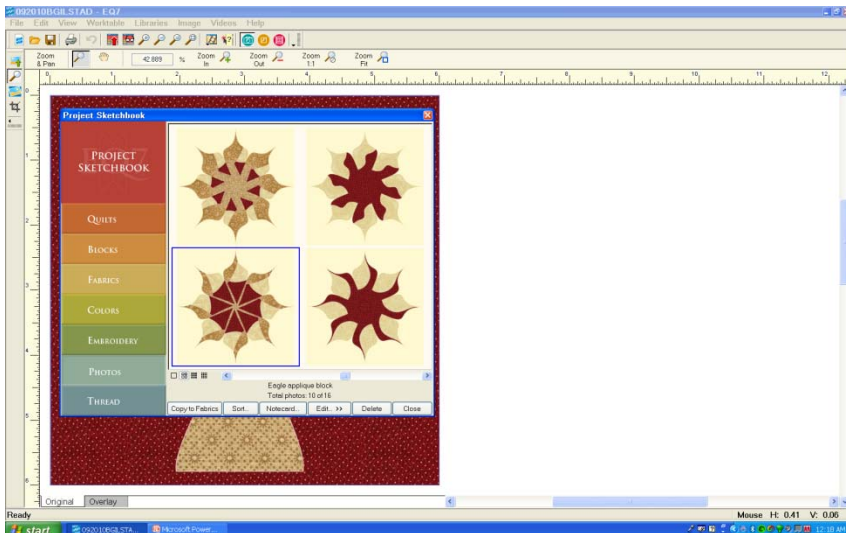
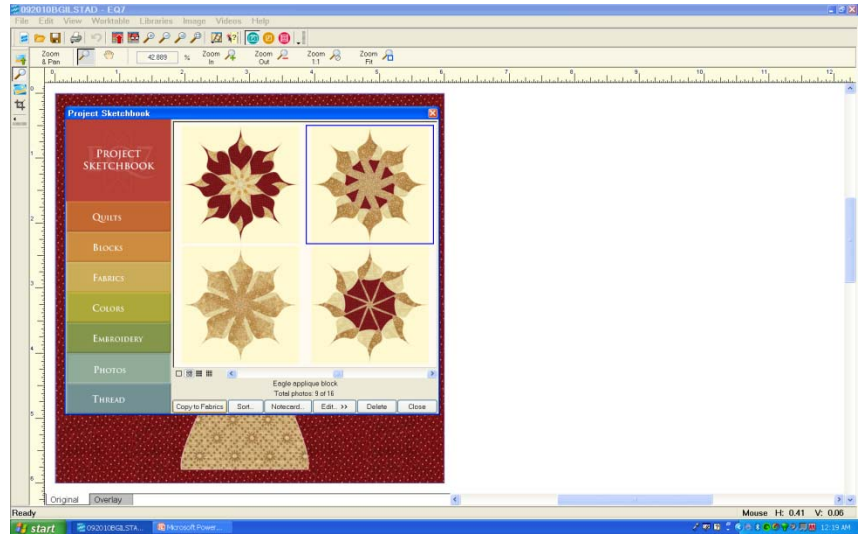
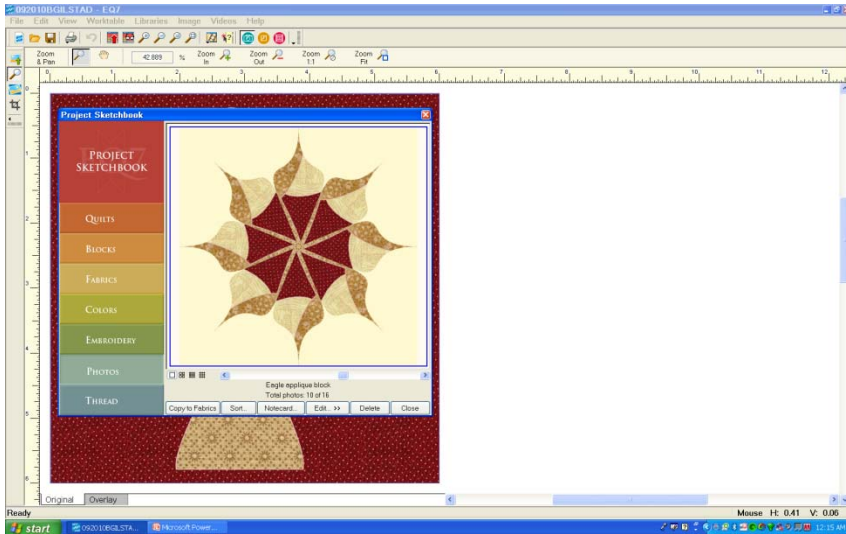
Scanned fabric swatches into computer, colored block and exported image as jpg

Applied Circular Symmetry

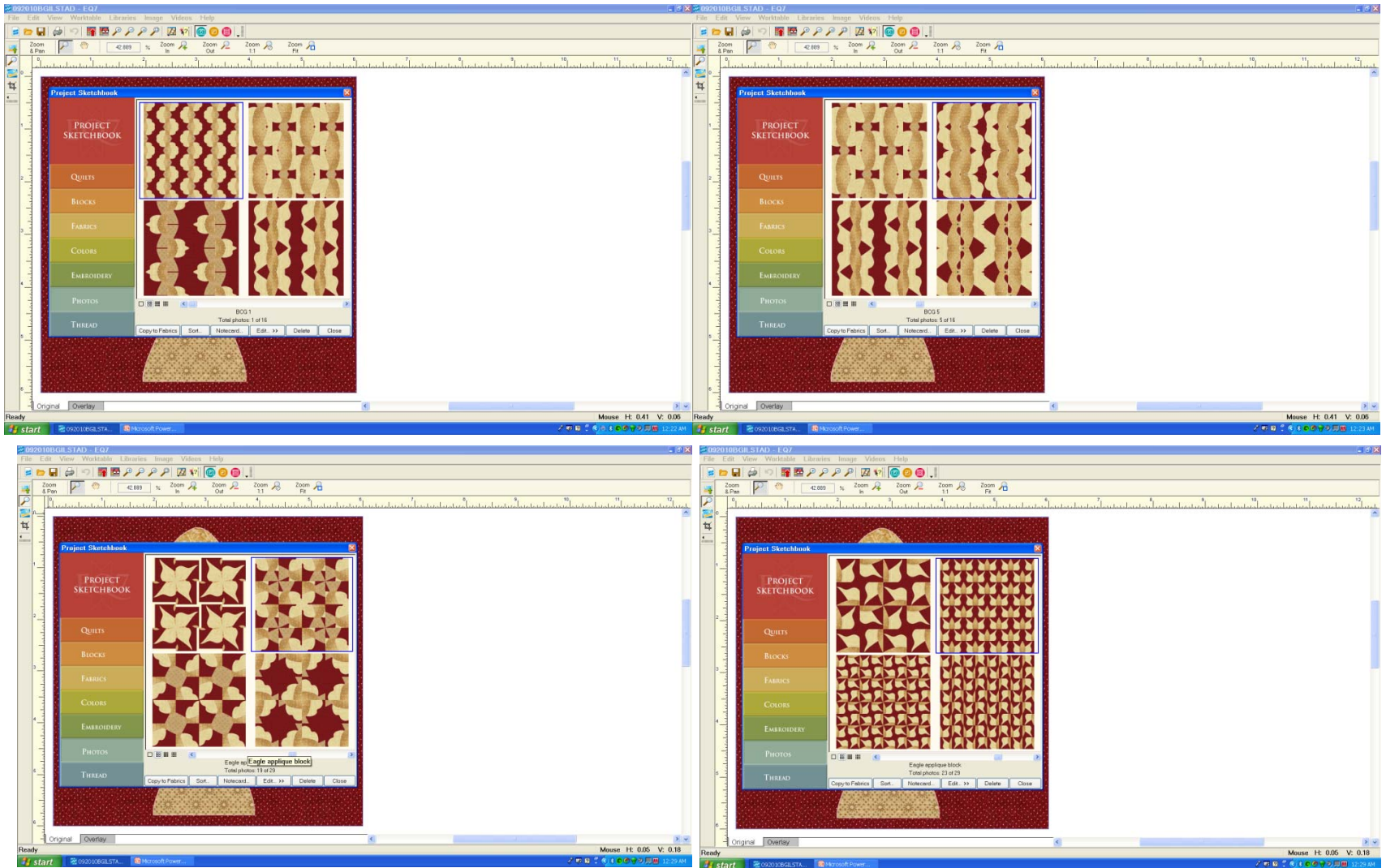


Imported image of eagle into EQ Photo Library

Created more examples



Next, applied Square Symmetry

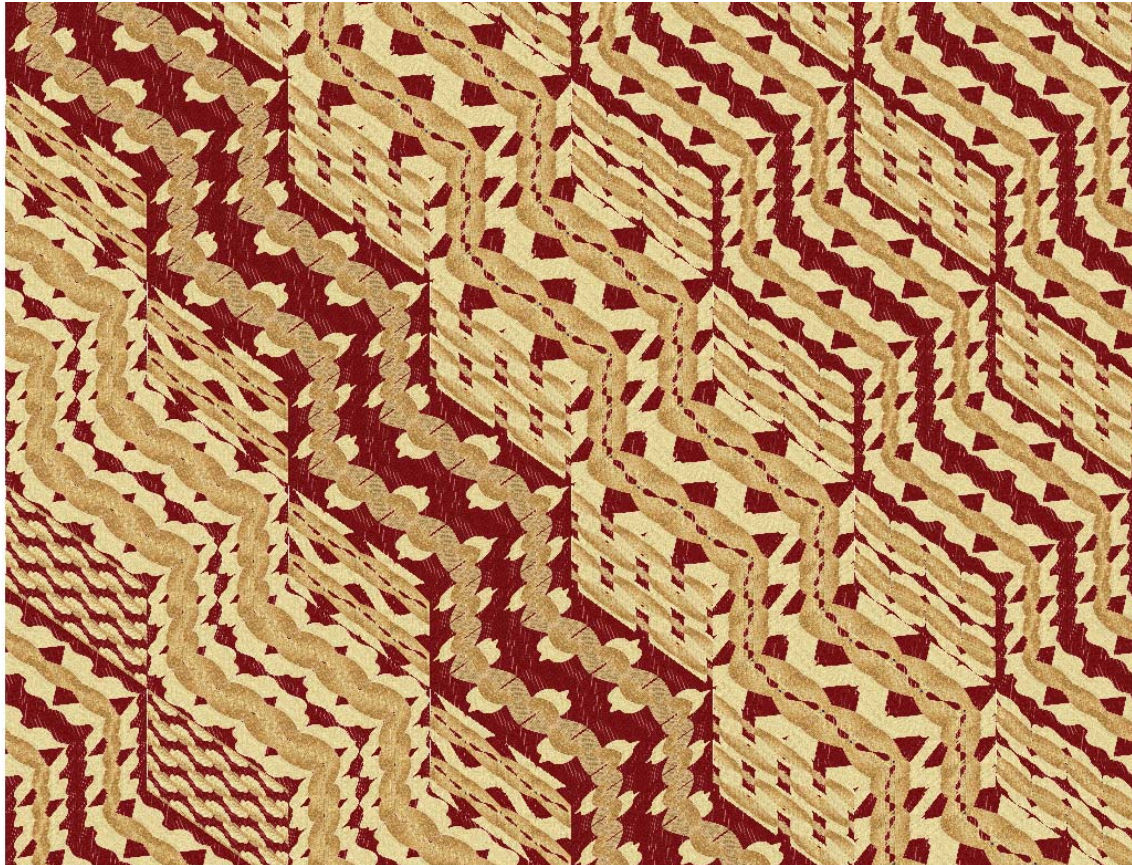


Prepared layout for first quilt design

The screenshot displays the EQ7 software interface for quilt design. The main workspace shows a grid of 16 diamond-shaped blocks arranged in a 4x4 pattern. The overall size is 100,000 x 81,000 (ins). The 'Variable Blocks Layout' panel on the right provides the following settings:

- Size of quilt's center layout: 100,000 x 81,000
- Number of blocks:
 - Horizontal: 4
 - Vertical: 4
- Finished dimensions of top:
 - Horizontal: 25,000
 - Vertical: 18,000
- Finished dimensions of side:
 - Vertical: 9,000

The bottom status bar shows 'Ready' and 'Quilt: 100,000 x 81,000 (ins) Mouse H: 35.35 V: 20.25'. The Windows taskbar at the bottom includes the Start button and open applications like '092010BGILSTA...' and 'Microsoft Power...'.

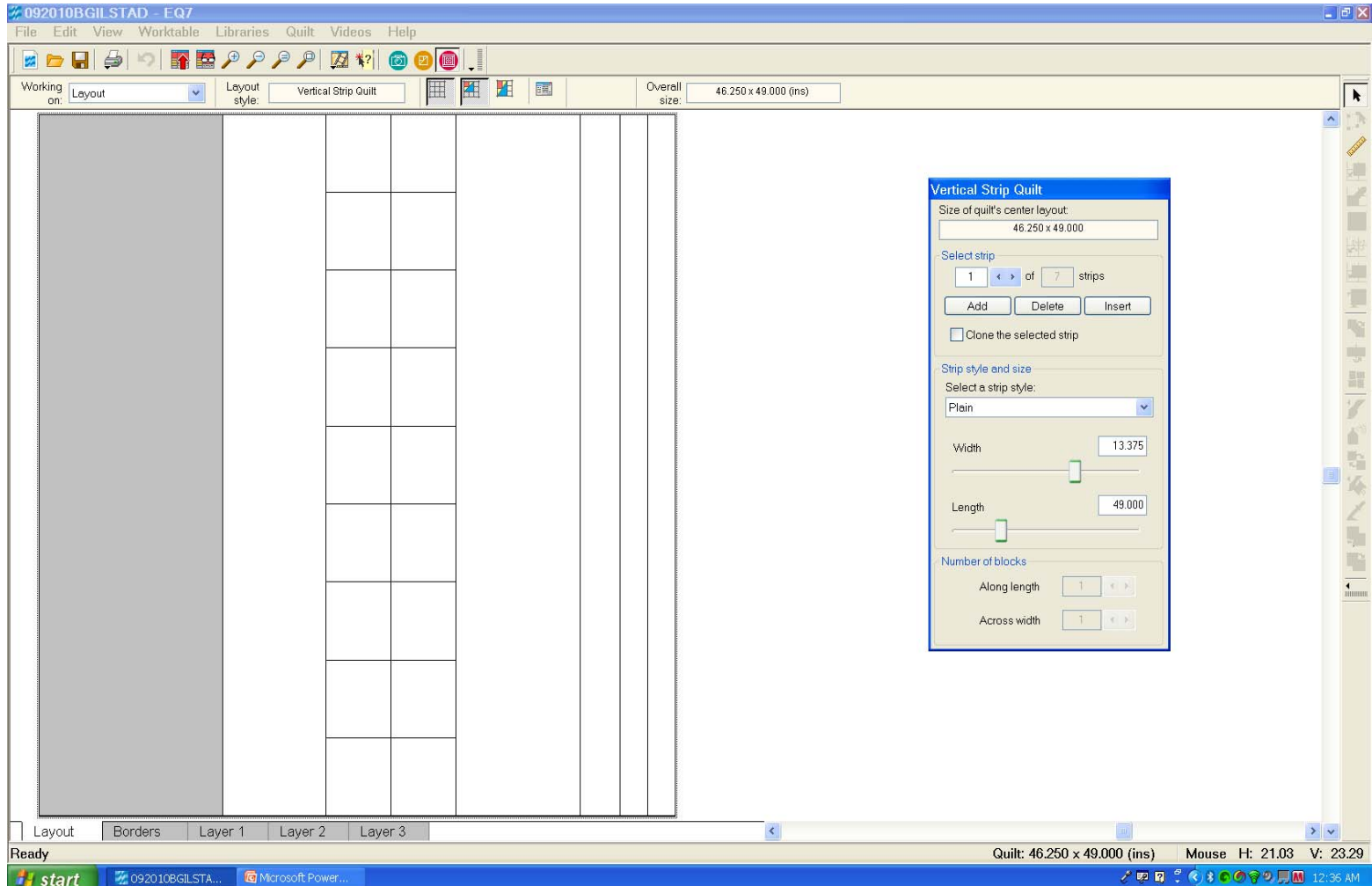


Flowing Steps

Designed especially for the September 2010 EQ Challenge

bgilstad@sbcglobal.net

Prepared layout for second quilt design





Twist and Turn

Designed especially for September 2010 EQ Challenge

bgilstad@sbcglobal.net